



REGIONAL SPECIALISED METEOROLOGICAL CENTRE -TROPICAL CYCLONES, NEW DELHI
TROPICAL WEATHER OUTLOOK

DEMS-RSMC TROPICAL CYCLONES NEW DELHI DATED 14.08.2025

TROPICAL WEATHER OUTLOOK FOR THE NORTH INDIAN OCEAN (THE BAY OF BENGAL AND THE ARABIAN SEA) VALID FOR THE NEXT 168 HOURS ISSUED AT 0600 UTC OF 14.08.2025 BASED ON 0300 UTC OF 14.08.2025.

BAY OF BENGAL:

Yesterday's low-pressure area over Westcentral & adjoining Northwest Bay of Bengal off North Andhra Pradesh and South Odisha coasts lay over northwest and adjoining areas of Westcentral Bay of Bengal and South Odisha-North Andhra Pradesh Coasts at 0300 UTC of today, the 14th August 2025. The associated upper air cyclonic circulation extends upto 7.6 km above mean sea level tilting southwards with height. It is likely to move west-northwestwards across south Odisha-North Coastal Andhra Pradesh during next 24 hours.

Scattered to broken low and medium clouds with embedded intense to very intense convection lay Bay of Bengal and Andaman Sea.

***PROBABILITY OF CYCLOGENESIS (FORMATION OF DEPRESSION) DURING NEXT 168 HRS:**

24 HOURS	24-48 HOURS	48-72 HOURS	72-96 HOURS	96-120 HOURS	120-144 HOURS	144-168 HOURS
NIL	NIL	NIL	NIL	NIL	NIL	NIL

***NOTE: EVERY 24HR FORECAST IS VALID UPTO 0300 UTC (0830 IST) OF NEXT DAY**

ARABIAN SEA:

Scattered to broken low and medium clouds with embedded intense to very intense convection lay over west Arabian Sea and east Arabian Sea off Maharashtra-Goa-Karnataka-Kerala coasts, Lakshadweep Islands area and Comorin area. Scattered low and medium clouds with embedded weak to moderate convection lay over rest of the Arabian Sea.

***PROBABILITY OF CYCLOGENESIS (FORMATION OF DEPRESSION) DURING NEXT 168 HRS:**

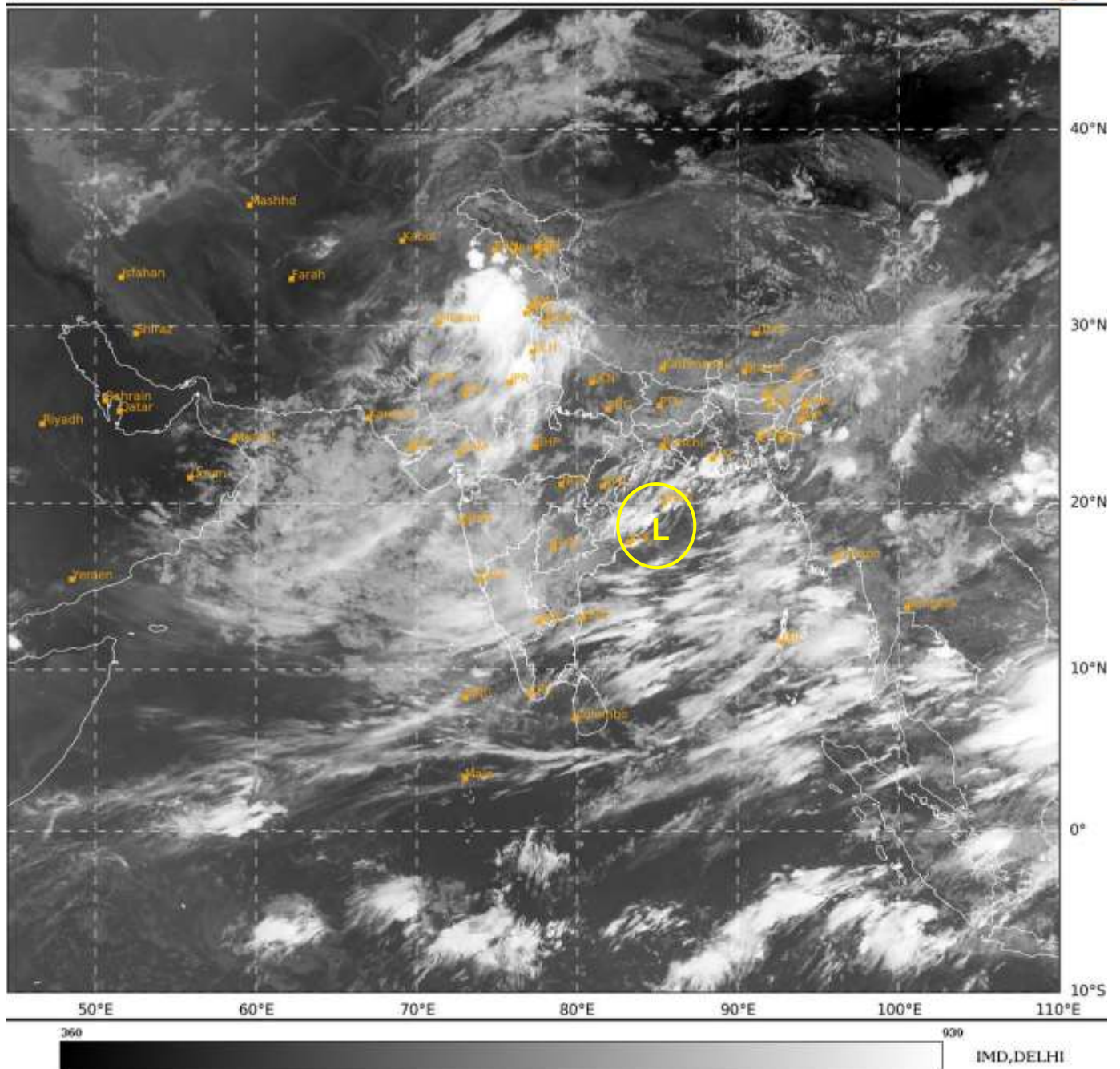
24 HOURS	24-48 HOURS	48-72 HOURS	72-96 HOURS	96-120 HOURS	120-144 HOURS	144-168 HOURS
NIL	NIL	NIL	NIL	NIL	NIL	NIL

***NOTE: EVERY 24HR FORECAST IS VALID UPTO 0300 UTC (0830 IST) OF NEXT DAY**

REMARKS: Nil

SAT : INSAT-3DR IMG
IMG_TIR1 10.8 um
LIC Mercator

14-08-2025/(0315 to 0342) GMT
14-08-2025/(0845 to 0912) IST



L: LOW PRESSURE AREA

Cloud distribution: (a) Isolated: <25%, Scattered:25-50%, Broken: 51-75%, Solid:>75%, Convection Intensity: (a) Weak: Cloud Top Temperature(CTT)>-25°C,(b)Moderate:CTT:-25°Cto-40°C,(c)Intense:CTT: -41°Cto -70°Cand(d)Very Intense::Less than -70°C
PROBABILITYOFCYCLOGENESIS(FORMATIONOFDEPRESSION):NIL:0%,LOW:1-33%,MODERATE:34-66%ANDHIGH:67-100%
ThisisaguidanceBulletinforWMO/ESCAPPanelMembercountries.VisitrespectiveNationalwebsitesforCountryspecificBulletins